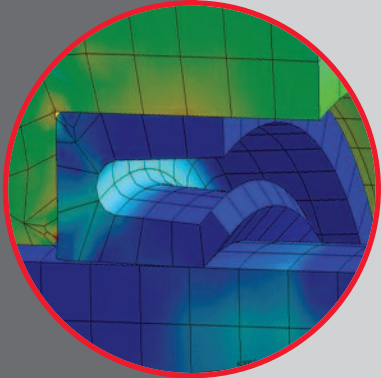
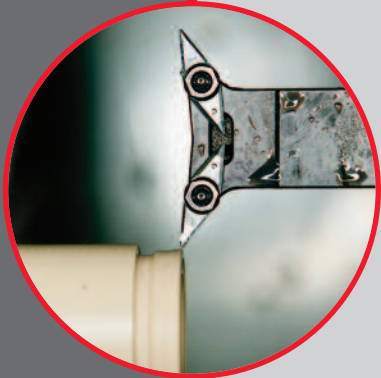
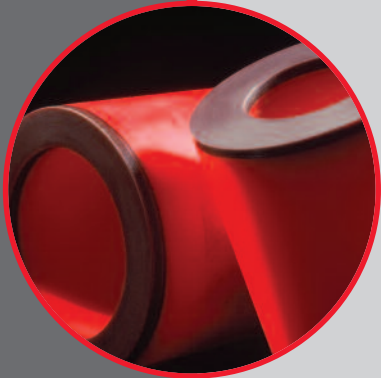


# MACHINE SEAL MANUFACTURE



**SEALCO**  
INTERNATIONAL LIMITED

H I G H P E R F O R M A N C E E N G I N E E R E D S E A L I N G S O L U T I O N S

# SEALCO

INTERNATIONAL LIMITED

Sealco International is one of the UK's leading suppliers of sealing products, and as part of our ongoing commitment to provide the best service to our customers, we are now able to offer bespoke solutions to suit individual applications.

Our new state-of-the-art Sealmaker Seal Production Centre allows us to produce the optimum seal in the appropriate material, without the need for costly tool charges or high minimum order quantities.

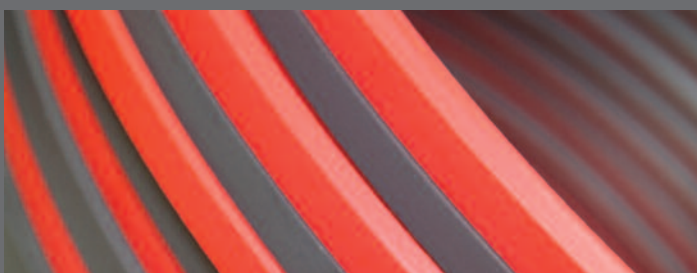


The profile and material options shown opposite highlights a selection of typical profiles available - but the possibilities are endless and we would be pleased to discuss your specific application.

We use industry specific materials such as NORSOK certified elastomers suitable for oil and gas applications as well as food and water grade materials.

Our flexible manufacturing produces true JIT supply of both standard and bespoke product. This coupled with our large stock of elastomer and PTFE products allows you to keep your stocks low and reduce costs.

We offer full technical support from concept to the finished product - on-time - every time.



HIGH PERFORMANCE ENGINEERED SEALING SOLUTIONS

WIPERS	ROD SEALS	PISTON SEALS
WR01	RS01	PS01
WR01A	RS01A	PS01A
WR02	RS01B	PS01B
WR02A	RS02	PS02
WR02B	RS02A	PS02A
WR02C	RS02B	PS03
WR02D	RS03	PS04
WR03	RS04	PS05
WR04	RS05	PS08
WR07	RS08	PS08A
WR08	RS09	PS08B
WR11	RS09A	PS08C
WR12	RS09B	PS08D
WR13	RS91	PS08E
WR13-E2	RS91B	PS08F
WR14	RS16	PS81
WR15	RS17	PS09
WR17	RS17A	PS09A
WR18	RS17B	PS16
	RS17C	PS16A
	RS17D	PS17
	RS17E	PS19
	RS19	PS20
	RS20	PS23
	RS31-33	PS35
	RS35	
BACK-UP RINGS		
BUR08		
BUR09		
BUR10		
BUR11		
BUR12		
BUR13		

## SYMMETRICAL SEALS



PR506



PR506A



PR506B



PR506C



PR506D



PR506E



PR507



PR510SP



PR510-12



PR513-15



PR518



PR519B



PR519C



PR519D



PR522



PR599

## GUIDE RINGS



BWR01



BWR01A



BWR03



BWR04



BWR05



BWR06



BWR07



BWR08



BWR09

## ROTARY SEALS



OS01



OS02



OS08



R03



R04



R04A



R05



R05A



VR06



VR07



R08



R08D



R09



R09A



R10



R10A



R11



RS19A



PS19A

## O-RINGS



OR



ORH



ORV



QR01



SS01

## MINING SEALS



P50



P51



P51G



P52



P53



P54



R50



R51



R52



R53



W50



W51



W53



W54



BWR01-P



BWR01-R



P58

## ADDITIONAL PROFILES



MATERIAL	APPLICATION TEMP	HRDN. at 20°C
PU red U203-R95	- 30 to + 105°C	Shore A 95 ± 2
PU green U203-G95	- 30 to + 105°C	Shore A 95 ± 2
PU FDA light blue U203-B95	- 30 to + 105°C	Shore A 95 ± 2
PU FDA natural U203-95FDA	- 30 to + 105°C	Shore A 95 ± 2
PU MoS <sub>2</sub> grey U203-GM95	- 30 to + 105°C	Shore A 95 ± 2
PU 57 Shore D dark blue U203-D57	- 30 to + 90°C	Shore D 57 ± 2
PU 57 Shore D + MoS <sub>2</sub> grey U203-D57G	- 30 to + 90°C	Shore D 57 ± 2
NBR black N107-B85	- 25 to + 100°C	Shore A 85 ± 5
NBR 95 black N109-B95	- 25 to + 100°C	Shore A 95 ± 5
NBR FDA white N111-W85	- 22 to + 100°C	Shore A 85 ± 3
H-NBR black HN112-B85	- 25 to + 150°C	Shore A 85 ± 5
FPM brown F109-BR85	- 20 to + 210°C	Shore A 85 ± 5
FPM FDA brown F110-BR85	- 20 to + 210°C	Shore A 85 ± 5
FPM black F111-B85	- 25 to + 210°C	Shore A 85 ± 5
EPDM black E131-B85	- 50 to + 130°C	Shore A 85 ± 5
EPDM FDA white E132-W85	- 50 to + 100°C	Shore A 85 ± 3
EPDM KTW black E133-W270	- 40 to + 120°C	Shore A 85 ± 5
Silicone FDA red S102-R85	- 55 to + 210°C	Shore A 85 ± 5
Silicone FDA blue S103-BL85	- 55 to + 180°C	Shore A 85 ± 3
AFLAS black AF101-B85	- 15 to + 210°C	Shore A 85 ± 5
POM FDA white P101-WE	- 60 to + 100°C	—
PA FDA natural A112-WC	- 30 to + 105°C	—
PTFE-F grey T105-G	- 200 to + 260°C	Shore D 55 - 60
PTFE-P FDA white T101-W	- 200 to + 260°C	Shore D 51 - 65
PTFE-40% Bronze brown T110-BR40	- 200 to + 260°C	Shore D 62 - 67
PTFE-40% Bronze blue T115-BR40	- 200 to + 260°C	Shore D 62 - 67
PTFE-60% Bronze brown T120-BR40	- 200 to + 260°C	Shore D 65 - 70
PTFE-25% Carbon grey T125-C25	- 200 to + 260°C	Shore D 62 - 67
PEEK natural beige PK100-CN	- 50 to + 250°C	Shore D 90

The indicated low temperatures are a general guide only as the function of the seal at low temperatures also depends upon the seal design, the service conditions and on the surrounding metal parts. The indicated high temperature may be exceeded, but this will reduce service life.

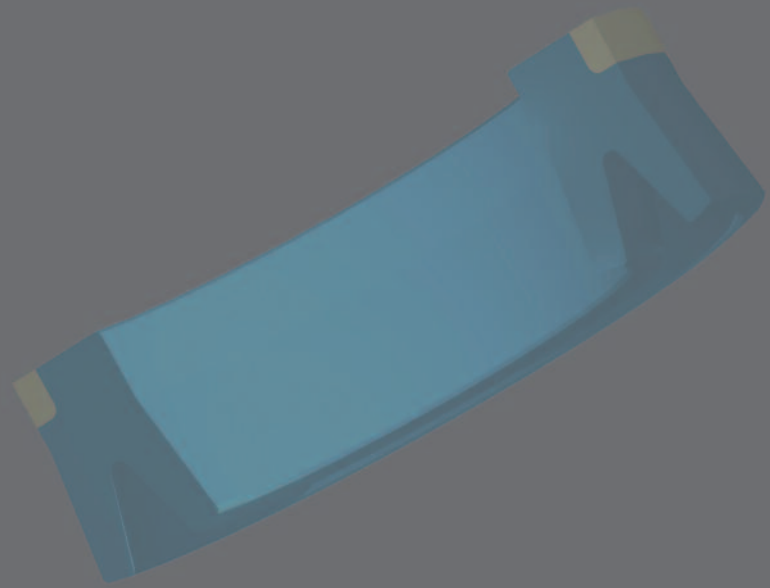


## Special profiles

In addition to the standard profiles listed, we can also manufacture special and machined parts customised to individual customer drawings or in special geometries developed jointly with our technical development team.

From the humble O-ring through to highly technical products such as metal seals, PTFE seals and bespoke machined solutions, Sealco International are ideally placed to provide a comprehensive high performance engineered sealing solution to suit your requirements.

H I G H P E R F O R M A N C E E N G I N E E R E D S E A L I N G S O L U T I O N S



# SEALCO

INTERNATIONAL LIMITED

Sealco House  
Maypole Fields  
Halesowen  
West Midlands  
B63 2QB  
UK

+44 (0) 1384 413058 **t**

+44 (0) 1384 568729 **f**

[sales@sealco.co.uk](mailto:sales@sealco.co.uk) **e**

[www.sealco.co.uk](http://www.sealco.co.uk) **w**