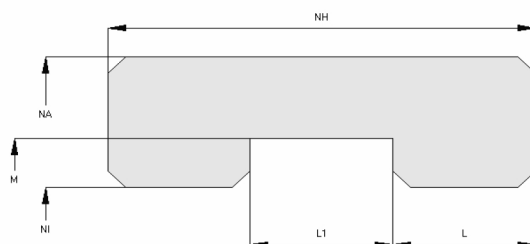


# Profile Data

## Guide Ring BWR07



### **Function**

Guiding elements are designed to prevent metal to metal contact between components of hydraulic systems e.g. piston and cylinder barrel or shaft and cylinder head.

### **Features**

- ⇒ Normally cut at an angle for easy installation, but also available as non-split version.
- ⇒ For use in piston applications.
- ⇒ Integrated collar on Inside diameter.
- ⇒ Design combines guiding and backing function.
- ⇒ Low dynamic friction.
- ⇒ Low break-away forces after long standstills.

### **Application**

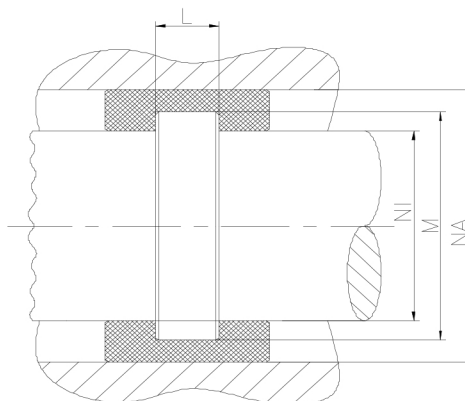
Reciprocating pistons and rods in hydraulic cylinders, plungers.

### **Installation**

Snap-in installation.

### **Seal housing recommendation**

<b>Tolerances</b>	<b>[mm]</b>	
∅ NA	H8	
∅ NI	h9	
∅ M	h9	
<b>Surface roughness</b>	<b>Rtmax [μ]</b>	<b>Ra [μ]</b>
Bottom of groove	≤ 6.3	≤ 1.6
Face of groove	≤ 15	≤ 3
<b>Sliding surface</b>	<b>Rtmax [μ]</b>	<b>Ra [μ]</b>
PU, elastomeres	≤ 2.5	≤ 0.1-0.5
PTFE	≤ 2	≤ 0.05-0.3



Sealco House, Maypole Fields Halesowen, West Midlands, UK, B63 2QB

T: (+44)1384 413058 E: sales@sealco.co.uk W: www.sealco.co.uk