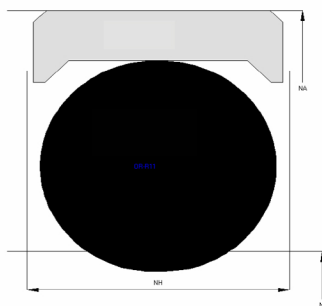


Profile Data

Rotary Seal R11



Function

Rotary seals are designed to seal the pressurized hydraulic fluid against the atmosphere, preventing leakage and pollution of the environment or to transfer liquids and/or gases from a stationary part into or out of rotating machinery.

Features

- ⇒ Asymmetrical, double acting rotary seal for outside sealing, designed with interference of the O-Ring on the ID and no interference of the PTFE glide ring on the OD.
- ⇒ Excellent sealing performance at low speeds with high pressure.
- ⇒ No tendency to “stick-slip” effect.
- ⇒ Low break-away load after long standstills.
- ⇒ Good gap extrusion resistance.

Application

Slow moving shafts, pivoting movements, revolving distributors, swivel joints.
Max. pressure 350 bar, max. speed 0.4 m/s.

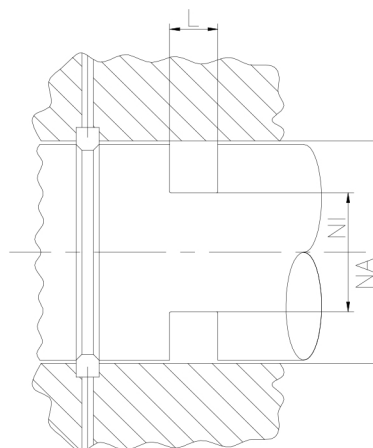
Installation

Snap-in installation.

Attention: PTFE glide rings need calibration after installation!

Seal housing recommendation

Tolerances	[mm]	
L < 10mm	+ 0.2	
L ≥ 10mm	+ 0.3	
∅ NA	H8	
∅ NI	f8	
Surface roughness	Rtmax [μ]	Ra [μ]
Bottom of groove	≤ 6.3	≤ 1.6
Face of groove	≤ 15	≤ 3
Sliding surface	Rtmax [μ]	Ra [μ]
PU, elastomeres	≤ 2.5	≤ 0.1-0.5
PTFE	≤ 2	≤ 0.05-0.3



Sealco House, Maypole Fields Halesowen, West Midlands, UK, B63 2QB

T: (+44)1384 413058 E: sales@sealco.co.uk W: www.sealco.co.uk