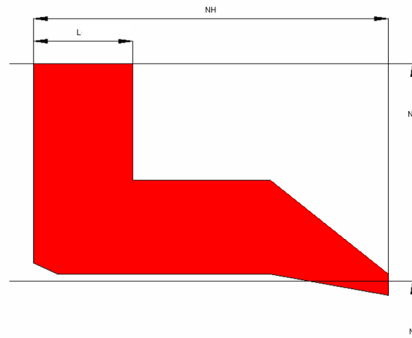


Profile Data Rod Seal RS16



Function

Rod seals are designed to seal the pressurized hydraulic fluid against the atmosphere or between two pressurized spaces.

Features

- ⇒ Asymmetrical, single acting rod seal.
- ⇒ Long sealing lip compensates for radial inaccuracy or excentricity.
- ⇒ Useable for long stroke lengths.
- ⇒ Low break-away load after long standstills.
- ⇒ Seal design tends to "stick-slip" effect.

Application

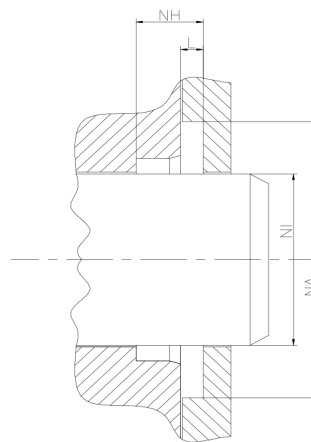
Reciprocating pistons in hydraulic and pneumatic cylinders.
Replacement for seal designs (leather seals etc.) used in old cylinders.
Max. pressure 160 bar, max. speed 0.5 m/s.

Installation

Clamped by flange.

Seal housing recommendation

Tolerances	[mm]	
NL	+ 0.2	
NH	+ 0.2	
∅ NA	H10	
∅ NI	f8	
Surface roughness	Rtmax [μ]	Ra [μ]
Bottom of groove	≤ 6.3	≤ 1.6
Face of groove	≤ 15	≤ 3
Sliding surface	Rtmax [μ]	Ra [μ]
PU, elastomer	≤ 2.5	≤ 0.1-0.5
PTFE	≤ 2	≤ 0.05-0.3



Sealco House, Maypole Fields Halesowen, West Midlands, UK, B63 2QB

T: (+44)1384 413058 E: sales@sealco.co.uk W: www.sealco.co.uk