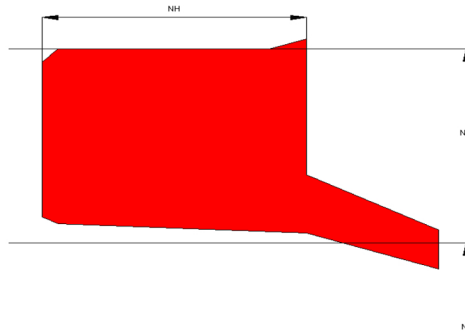


Profile Data WIPER WR02C



Function

Wipers are designed to keep dust, dirt, sand and others off the rod and the sealing and guiding elements, avoiding abrasive damage caused by external contamination.

Features

- ⇒ The profile is designed with an additional sealing lip on the OD which provides a good static fit, preventing the entry of humidity and other contamination via the outside diameter.
- ⇒ Sharp sealing lip for wiping in extreme conditions (mining industry, ice,...).
- ⇒ Commonly made out of hard materials such as hard grade PU.

Application

Reciprocation rods in hydraulic cylinders, plungers.

Extreme working conditions in mining industry or earth moving devices.

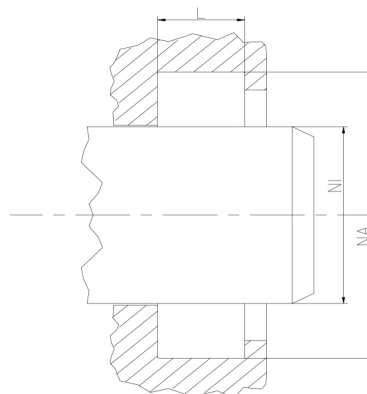
Max. pressure 0 bar, max. speed 4 m/s.

Installation

Snap-in installation.

Seal housing recommendation

Tolerances	[mm]	
L < 10mm	+ 0.2	
L ≥ 10mm	+ 0.3	
∅ NA	H11	
∅ NI	f 8	
Surface roughness	Rtmax [μ]	Ra [μ]
Bottom of groove	≤ 6.3	≤ 1.6
Face of groove	≤ 15	≤ 3
Sliding surface	Rtmax [μ]	Ra [μ]
PU, elastomeres	≤ 2.5	≤ 0.1-0.5
PTFE	≤ 2	≤ 0.05-0.3



Sealco House, Maypole Fields Halesowen, West Midlands, UK, B63 2QB

T: (+44)1384 413058 E: sales@sealco.co.uk W: www.sealco.co.uk